



# EverBase<sup>3</sup>

MODULAR FLOORING

## TENT AND EVENT FLOORS

### MODULAR INTERLOCKING FLOORING

#### TENT FLOORING FOR EVENTS & INDUSTRIAL NEEDS

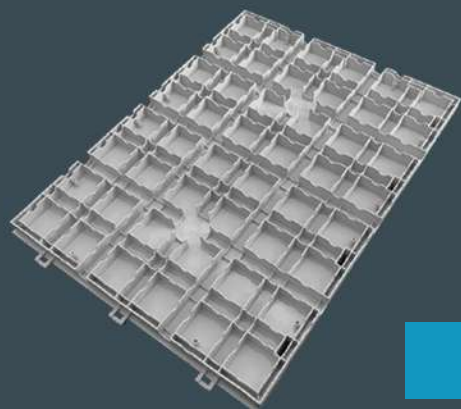
**EverBase<sup>3</sup>** Tent and Event Flooring Systems are ideal for corporate, industrial, military and event needs. Each modular flooring system features integrated cable channels and bi-directional structural reinforcement cross-ribs for added strength and durability.

**EverBase 3** is a 18" x 24" modular flooring tile available in both a solid top (ST) and drainage top (DT) option, in both a Light Grey and Translucent color option.

*\*Custom colors available with minimum orders.*

#### 100% WEATHER & WATER RESISTANT

All **EverBlock** flooring tiles are 100% weather and water resistant. Modules are completely chemical resistant and can be used in wet environments. Once installed, **EverBase 3** tent floors allow water to drain and flow underneath, providing a stable surface while keeping your guests dry and out of the water or mud.



UNDERSIDE  
*Durable Cross-Ribs*

#### PREVENT DAMAGE TO GRASS & GROUND SURFACES

**EverBase 3** tent and event floors will protect your clients valuable lawns, parks, sports fields, and grounds against wear and tear, and will prevent damage from pedestrians, golf carts, and rolling equipment. **EverBase 3** tent floors was designed to follow the contour of undulating floors while still providing a uniform and solid surface for walking, dancing, and more.

#### QUICK SITE TURN-OVER & INSTALLATION

**EverBase 3** transports in 3ft x 4ft pre-assembled sheets, allowing for rapid installation by a minimal crew. A 20ft x 20ft tent floor can be installed by two people in about 15 minutes.

Flooring modules connect in a matrix, creating a seamless tent floor that is both attractive and safe for attendees. Due to our unique connector design, sections can be nudged by foot into their connection position and then snapped into place with a simple step. This speeds installation and improves worker safety. To remove sections, simply lift **EverBase 3** up at an angle, disengaging the tent floor tiles for transport and further use.





## TENT AND EVENT FLOORS

### MODULAR INTERLOCKING FLOORING

#### RUN ELECTRICAL CORDS UNDERNEATH

Run electrical and communication cables underneath all versions of **EverBase** Flooring, for tent lighting, exhibits, and other in-tent needs, using the integrated cable channels running through all tiles.

Run power to center poles for lights or along the side for trade show exhibits and other needs.

You can even run **LED** lighting underneath translucent flooring to create an ethereal look, alternating colors and patterns at your event.

#### EVERBASE 3 (EBF3) SPECIFICATIONS

Use EverBase 3 ST (Solid Top) and DT (Drainage Top) flooring to protect sensitive stadium turf from damage due to concerts, festivals and other on-field events. Modules come pre-assembled in 3ft x 4ft sections for ease of transport and storage.

Material: EverBase 3 is manufactured using high-impact polypropylene, co-polymer plastic, that contains impact modifiers for improved flex-modulus and long term durability.

Surface Dimension: 18" x 24" (3 sq/ft of coverage per module)

Height: 1.1"      Weight: 3.61 lbs. per module

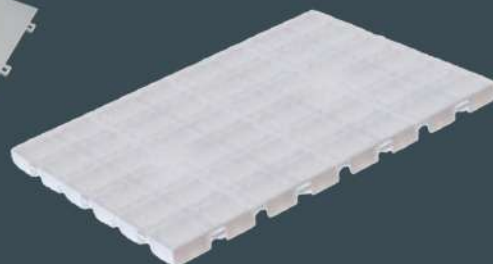
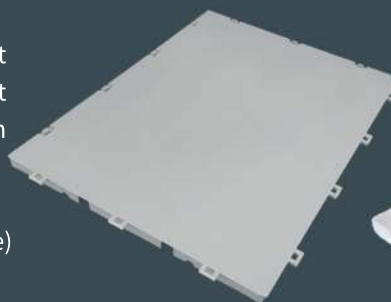
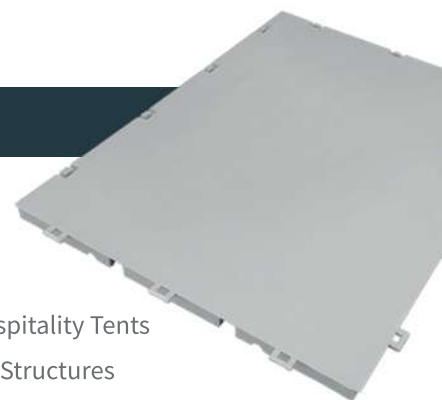
Color: (EBF3-ST/DT) Light Grey, Translucent

#### RAPID CONNECTION SYSTEM

**EverBase 3** is designed to install faster than older tent floor systems. Quicker installation means clients have more time for other event needs.

#### IDEAL FOR

- Corporate Event Tents
- Party & Wedding Tents
- Fair & Festival Tents
- Tournaments & Sporting Hospitality Tents
- Warehouse, Storage Tents & Structures
- Outdoor Kiosks & Retail Tents
- Pathways Between Tents & Structures
- Sub-Floor For Existing Wooden Dance Floors
- Military Tents



**SOLID TOP (ST)**

**DRAINAGE TOP (DT)**